

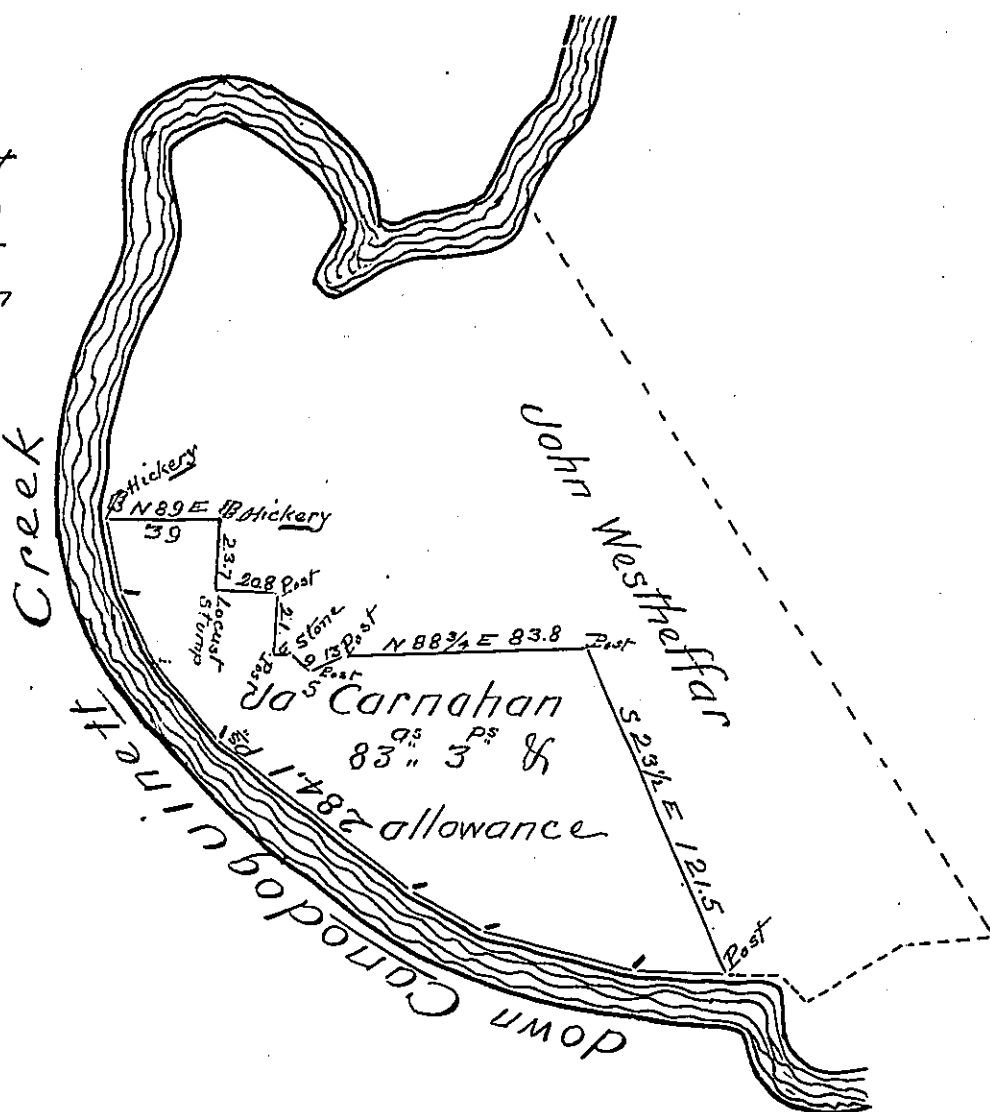
Courses & Distance round part of the tract of Land granted to Jas. Carnahan Beginn<sup>d</sup>. at a Hickery thence along John Westheffers Land

N 89 E 39  
 S 1 W 23.7  
 S 87 E 20.8  
 S 2 W 21  
 N 89 E 6  
 S 51 E 9  
 N 66 E 13  
 N 88 3/4 E 83.8  
 S 23 1/2 E 121.5

Thence down the Creek

N 85 1/4 W 32  
 N 74 3/4 W 54  
 N 62 W 28  
 N 52 3/4 W 84  
 N 40 1/4 W 34.1  
 N 25 1/4 W 26  
 N 15 3/4 W 26

284.1



Draught of 83 acres & 3 perches & allowance of 6 pr. ct for Roads &c. being part of 291 acres & 148 perches & allowance situate in Newton township Cumberland County, Surv<sup>d</sup>. In pursuance of a warrant granted to James Carnahan dated June 7<sup>th</sup> Anno Domini 1763 Surv<sup>d</sup> & Divided May 28 A. Dom. 1822

Sam<sup>l</sup> Ruby D.S

To Samuel Cochran Esquire  
 Surveyor General

IN TESTIMONY that the above is a copy of the original remaining on file in the Department of Internal Affairs of Pennsylvania, made conformably to an Act of Assembly approved the 16th day of February, 1833, I have hereunto set my Hand and caused the Seal of said Department to be affixed at Harrisburg, this sixteenth day of May 1904.

*George P. Brown*  
 Secretary of Internal Affairs.